

INSTRUCTIONS FOR USE

Self-Sampling Device QUICK BRUSH

What is HPV virus?

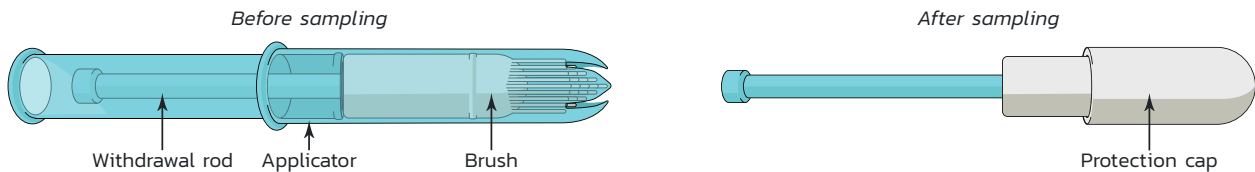
HPV (Human Papillomavirus) are most often transmitted during sexual intercourse. Some viruses are more aggressive and can cause lesions in the cervix that can progress to cancer.

What is Quick Brush?

The Quick Brush is a self-sampling intra vaginal device that allow the collection of cervico-vaginal fluid as an alternative to Pap Smear. It is a simple, quick and discreet manner of collecting samples to test for the presence of HPV.

The easy to use device is designed to be inserted in the same way as a sanitary tampon.

The sample is then sent to the pathology laboratory by the clinician, General Practitioner or Women's Health Clinic.



Results of Quick Brush Self-sampling

Your General Practitioner will contact you with the results of the test.

- A negative HPV result means you will only need to be tested again in 5 years' time.
- A positive HPV result, your General Practitioner will contact you for further examinations.

Precautions of use

- Do not use Quick Brush during menstruation.
- Do not use Quick Brush if you are pregnant or if you gave birth less than three months ago.
- Do not use vaginal products (vaginal contraceptives, vaginal eggs, lubricants, condoms) within 48 hours before using Quick Brush.
- Avoid sexual intercourse within 48 hours before using Quick Brush.
- Do not have vaginal douche within 24 hours of collection.
- In case of colposcopy, do not perform sampling within 24 consecutive hours.
- In case of smear or surgery, do not perform sampling within 3 consecutive months.

Warnings

- Do not use if the packaging and / or device is damaged or past the expiry date.
- This device is "Single Use Only".



CE Medical device CE marked since 2018



Do not use if the packaging is damaged



Single-use device



Manufacturer : Prince Médical - ZA La Sente du Moulin - 64 rue Gutenberg - 60530 Ercuis - France

Instruction.001.v2 - 03.11.18

Instructions for use



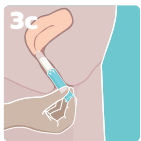
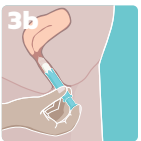
1 Wash your hands before using Quick Brush.



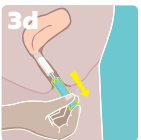
2 Remove the Quick Brush device from its packaging.



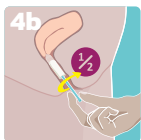
3 Insert the applicator into the vagina (up to the fingertips).



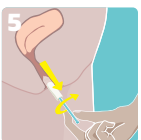
Push the device with the plunger (3b) until the Quick Brush is completely released (3c).



Remove the applicator and plunger. Discard them into a bio-bin.



Leave the device in place for at least 10 seconds, rotate by $\frac{1}{2}$ turn before withdrawal.



5 Remove the device by rotating the withdrawal rod.



6 Place the white protective cap on the device to protect the sampled cells.



7 Place the Quick Brush in the supplied plastic bag and close it.



8 Complete the information document and affix the identification label to the package provided.



9 If the sampling is performed at home, use the provided envelope to send the sample and information document to your General Practitioner or Clinic.